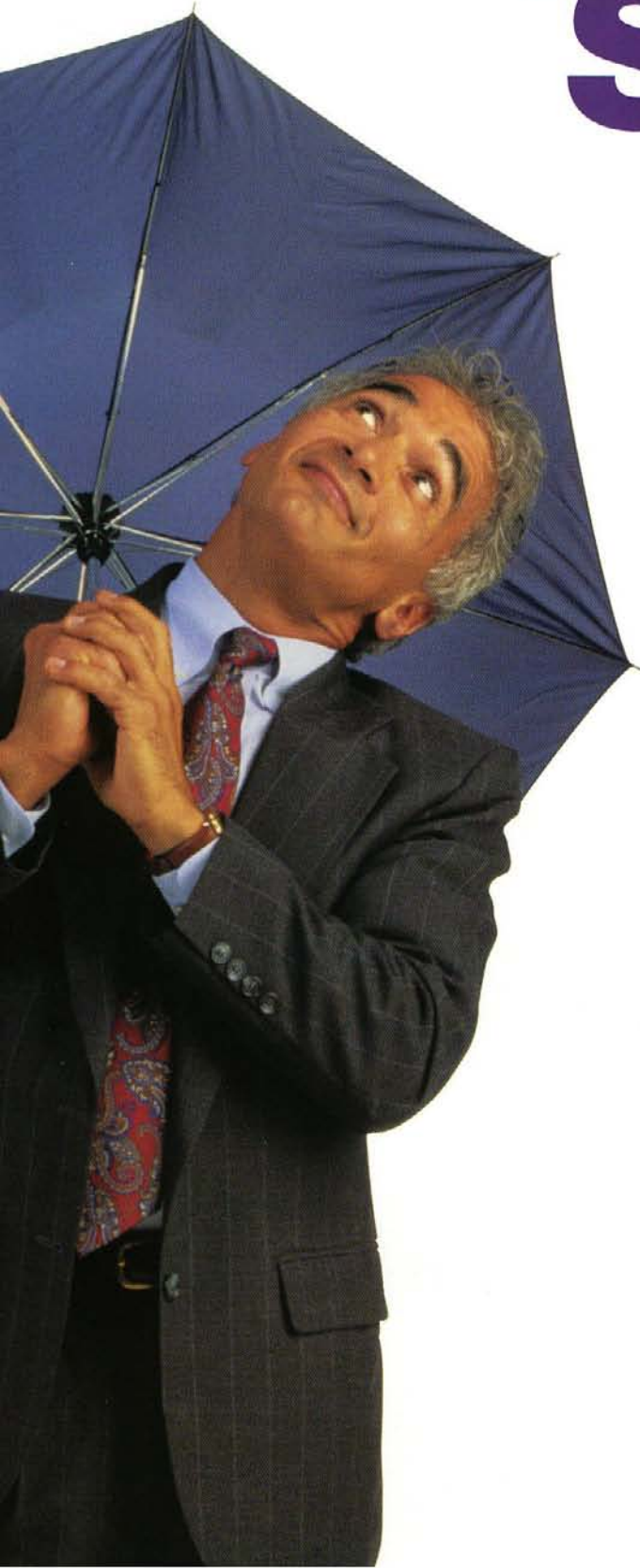
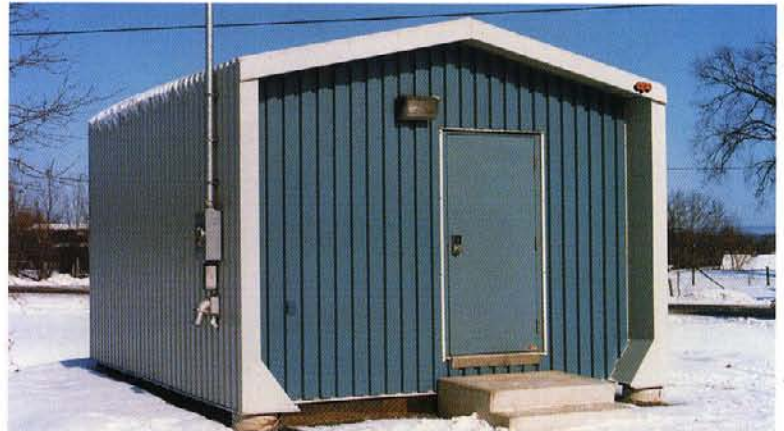


# Equipment Shelters



## Protecting Equipment

The protection of equipment is important for commercial and industrial businesses when economics and practicality are concerns. CPS equipment shelter units are durable, weatherproof, climate controlled, pressurized and structurally strong.



### Bell Canada

*Security alarms - smoke, fire, gas, break in and equipment failure - are included in our telecommunications equipment shelters. CPS offers exteriors with steel siding and roofing with a baked enamel finish, available in stock or custom colours and finishes.*



### Hydro Sub Station

*This sub station features all steel, non-combustible floors, walls and roof framing and is also available in combinations of fire protected wood and steel. In order to protect productivity of hydro controls and telecommunication equipment from weather conditions, theft or any other problem, this type of highly technical equipment needs to be sheltered in a housing unit.*

# Contain Protect Shelter



## Airport Control Equipment

*This type of pre-assembled structure is as sophisticated in design as the equipment it contains. Available in a wide variety of sizes, these durable, waterproof, climate controlled, pressurized, non-combustible and structurally strong equipment shelters are suited to meet any application.*



## Analyzer Shelter-Refinery

*Explosion-proof electrical components make up the construction of structures used in hostile environments. CPS offers custom specifications in addition to the options available for standard fixtures or special explosion-proof types including; distribution panels, breaker panels, lighting, heating, cooling, ventilation, intake & extract fans and power receptacles.*



## Pump House

*Computer engineered for strength and durability, the Ellipta structure will stay standing against the strongest winds and heaviest snow falls. The Ellipta is available in either a knock-down kit or a new pre-assembled version, designed for strength and easy assembly.*

