

**WHEN YOU NEED TO GET AWAY
FROM THE NOISE AND CONFUSION...**



GET A CPS PORTABLE PLUG-IN PLANT OFFICE

(A LITTLE PEACE & QUIET FOR YOUR PLANT MANAGEMENT)





It's easy to choose a sound-stopping CPS Portable Office.

If you, too, require an office where there isn't one now, turn to the people and products of CPS — Canadian Portable Structures.

With only one call, you can order a Mark IV or Mark VII with your choice of dozens of different options.

Both portable structures are completely pre-built and trucked to your location.

It's fast too... if you opt for CPS Fast Track service.

And, if need be, you can have your portable structure delivered fast. Using a special *Fast Track* scheduling system, CPS can produce, deliver and place your structure by forklift within three weeks of your order*.

Unlike permanent structures, CPS units mean no construction delays. And because the structures are pre-wired, they simply plug into existing utilities — ready to do business the same day.

And when you take delivery of a CPS portable structure, you're getting a strong, quality-built product. In fact, we say it's the strongest you'll find to give you maximum protection *inside or outside* against rain, snow, noise, heat, cold or the hazards of the workplace.

As convenient a structure today as it will be tomorrow.

With a CPS portable plug-in structure, you get total convenience for now and the future.

If, for example, you wish to move the structure later on, it's easily relocatable with a forktruck. No dismantling is required.

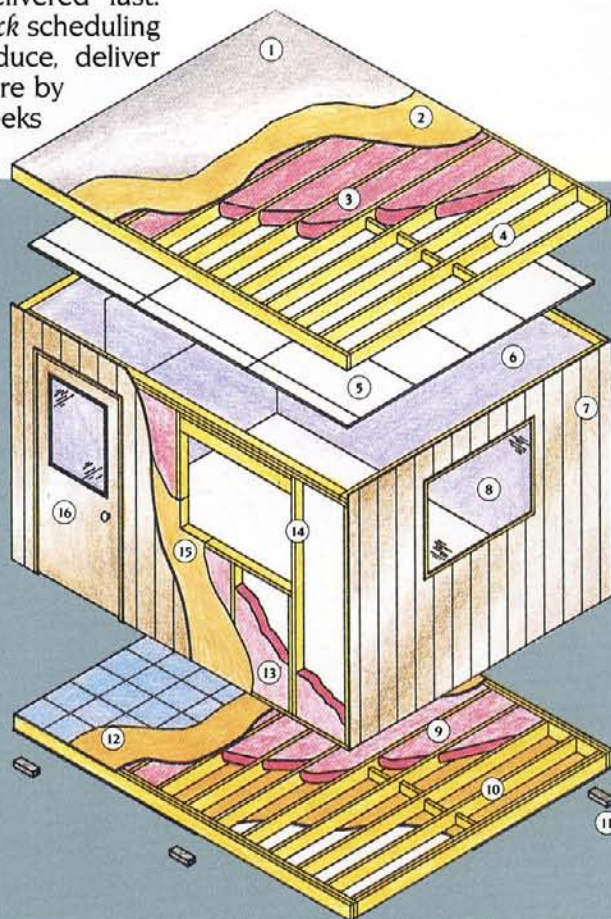
If you need additional space, a second storey can be added to the Mark VII structure — which is easily done in most cases without adding a mezzanine or super-structure.

And, if you wish to re-locate the second storey, that can be done easily too.

Portables built like they were meant to be permanent.

At CPS, we build portable structures for the longest life and the least maintenance. Using the latest in Computer Aided Design systems, the structure is planned down to the finest detail — with walls, windows and doors that fit precisely.

If the job calls for it, CPS portable plant offices can be fire-rated or built entirely of non-combustible materials... with a steel frame, steel cladding inside and out, steel window frames and reinforced safety glass. For extra protection, Class I explosion proof electrics are available as an option.



CPS PORTABLE PLUG-IN PLANT OFFICES RUGGEDLY BUILT BY DESIGN.

- 1. roofing
- 2. 7/16 inch roof sheathing
- 3. fiberglass insulation
- 4. structural wood roof framing
- 5. suspended grid system with white acoustic tile
- 6. 1/2 inch vinyl covered gypsum board
- 7. ribbed steel siding with enamel finish
- 8. fixed windows
- 9. fiberglass insulation
- 10. structural wood floor framing
- 11. steel base supports
- 12. plywood subfloor
- 13. fiberglass
- 14. 2x4 stud wall framing
- 15. 1/4 inch rigid wall sheathing
- 16. door in frame

Choose sound-proofing that meets your needs.

Studies indicate that excessive noise levels can cause employee fatigue and reduce employee efficiency. Foremen are often unable to give even simple instructions to employees in noisy environments, resulting in misunderstanding of oral communications.

To stop the transmission of sound, CPS offers various levels of noise insulation. The Mark IV is fitted with standard fibreglass and is suitable for areas like warehouses. In production areas with average noise levels, the Mark VII provides about 30 db. noise reduction†. For areas with excessive noise, choose one of the Sound Stop System options.

Buy rent or lease your CPS portable plug-in plant office.

The variety that CPS offers you doesn't stop at the options. There's also a number of different ways you can obtain your CPS structure.

You can buy, rent or lease your structure. CPS has a wide range of leasing plans available. A rental unit may be more suitable if your needs are temporary. However, if you do decide to buy, be assured that the re-sale value of a CPS structure is among the highest on the market.

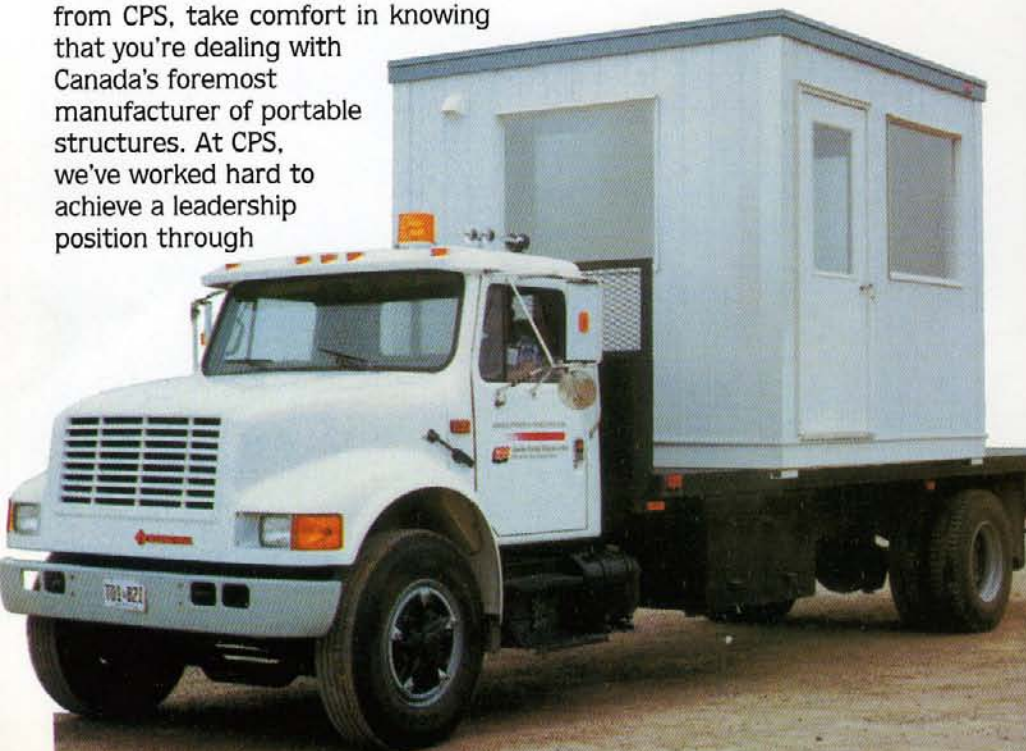
Also, when you order your structure from CPS, take comfort in knowing that you're dealing with Canada's foremost manufacturer of portable structures. At CPS, we've worked hard to achieve a leadership position through



excellent craftsmanship, customizing our capabilities to meet your needs and after-sales service that's designed to never let you down. In fact, at CPS we're so confident in our product and services that we offer you the following guarantee.

GUARANTEE

If, for any reason, you are not completely satisfied with the quality of your CPS portable structure upon delivery, we will replace the unit without any cost or obligation to you.



Mark IV and Mark VII portable plant offices come in all colours, shapes and sizes for any application.

Your CPS portable structure can be in your choice of twelve different colours. For maximum durability, all cladding finishes are baked enamel on galvanized steel.

Your structure can be multi-sectional to take advantage of the space available or for areas where access may be limited.

You can add dozens of options to meet your requirements – or to meet virtually any safety code for hazardous requirements.

Standard Exterior Colours

Tile Red	Int'l Orange	Barn Red
Bone White	Autum Gold	White White
Saddle Tan	Holstein Black	Forest Green
Dark Brown	Beige	Cocoa Brown
Regent Grey	Charcoal	Slate Blue

Delivery Schedule

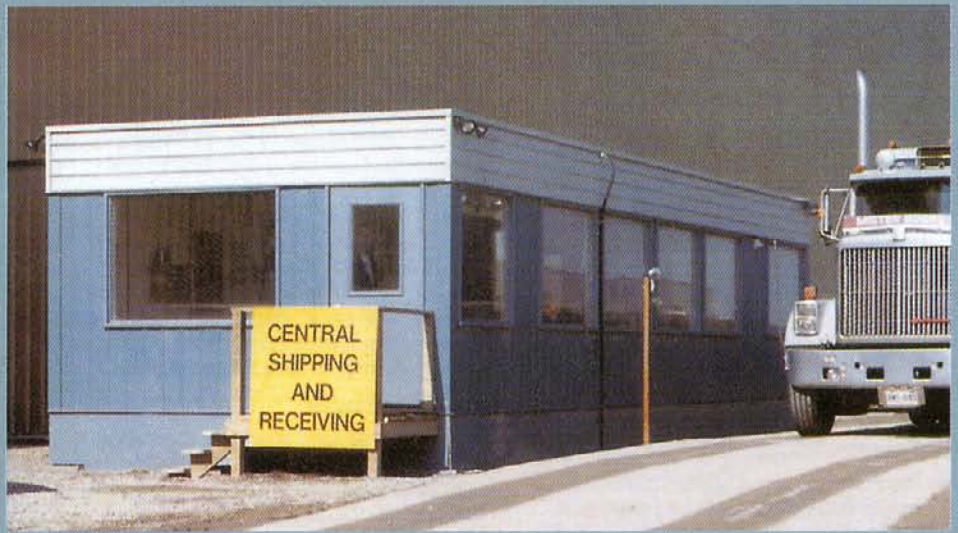
CPS keeps a wide selection of portable structures in stock for quick delivery. Normal delivery time for custom units is four to five weeks.

*Please note that *Fast Track* scheduling applies to standard layout buildings with minor variations only.

† Noise reduction figures for both CPS structures were determined by independent sound testing laboratories. Decibel rating may vary depending on noise frequency (hz).



CPS Mark IV elevated plant office with storage below



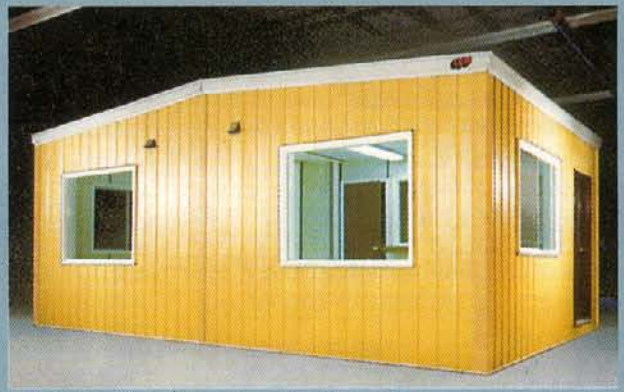
CPS Mark VII Shipping/receiving office - Newman Steel



CPS Mark VII two-storey with steel staircase



CPS Double office unit with connecting interior door - Skega Canada Ltd.



CPS 24' x 16' receiving office - Great Lakes Wire



CPS Marina management office - Port Whitby



CPS Mark VII Sales office for truck rental operation

MARK VII

Application

Office enclosures for in-plant high noise areas or exterior plant locations. Providing for an attractive, maintenance free working environment.

Floor Frame

Structural wood floor joists and multi-ply beams to suit 50 lbs/sq. ft. floor loading and span. 5/8" thick panel sub-floor fastened securely (glued and nailed for added strength) to floor joists. All joints are sanded smooth and filled as necessary.

Wall Frame

Walls have 2" x 4" wood studs spaced @ 24" centres with single bottom plates and double top plates. Window and door lintels to suit openings. 1/4" thick rigid exterior wall sheathing securely fastened to studs.

Roof Frame

Structural wood roof joists to suit 50 lbs/sq. ft. roof storage load and span. 7/16" thick rigid roof sheathing fastened securely to roof joists.

Insulation (Fibreglass Blanket)

Floor — 3-1/2" fibreglass insulation (R12)

Walls — 3-1/2" fibreglass insulation (R12)

Roof — 6" fibreglass insulation (R20)

2 mil poly vapour barrier

Interior Finish

Floor — .080 gauge 12" x 12" vinyl composite floor tile. 2-1/2" black vinyl baseboard.

Walls — Easy care vinyl covered 1/2" thick gypsum board with colour matched vertical vinyl joint strips. Flame spread rating 25.

Ceiling — Suspended system with metal tracks and 2' x 4' non-combustible white acoustic tile. Flame spread rating 25. Clear floor to ceiling height, approximately 7' 5".

Exterior Finish

Roof — Galvanized steel weatherproof.

Walls — 28 ga. ribbed steel siding and trims with maintenance free baked enamel finish in a choice of colours.

Underfloor — 1/4" rigid sheathing glued and nailed to joists.

Entrance Door

1-3/4" x 3'0" x 6'8" steel insulated door pre-hung in wood frame complete with 20" x 32" insulglass light, 1-1/2 pair butt hinges, keyed lockset, weatherstripping, noise and sweep seals, threshold, and check chain. Frame sealed with butyl based sealant.

Windows & Vents

4'0" wide x 3'6" high windows. Fixed insulglass lights. Quantity varies with layout. Frames sealed with butyl based sealant. Insulated air intake vent complete with gravity operated louvres.

Electrical

CSA approved fixtures. Wired to electrical code and Ontario Hydro inspected. Standard pre-wired electrical package includes surface mounted 1 ft x 4 ft fluorescent light fixtures with wraparound acrylic plastic lens complete with switch and lamps. Duplex electrical receptacles. Exterior service entry conduit passes through wall for ease of hook-up to 60 amp breaker type circuit panel with required breakers, 240 volt fixed baseboard heater with built-in thermostat. Wall mounted exhaust fan with switch. All wiring concealed in walls and roof. Check layout or quote for equipment capacities, quantities and locations.

Steel Base Supports

1/4" thick tubular steel 3" x 8" x 2" high steel supports. (2" clearance for fork truck lifting access.)

"Specifications are subject to change without notice where required to enhance the value of our Buildings."

MARK IV

Standard Specifications

If you've been considering in-plant office space for supervisory personnel, take a closer look at the economical Mark IV. This series offers solid construction and solid value in standard sizes.

Application

Office enclosures for in-plant areas or warehouse locations with moderate to low noise levels. Provides an attractive, maintenance free working environment.

Floor Frame

Structural wood floor joists and multi-ply beams to suit 50 lbs/sq. ft. floor loading and span. 5/8" thick panel sub-floor fastened securely (glued and nailed for added strength) to floor joists. All joints are sanded smooth and filled as necessary.

Wall Frame

Walls have 2" x 4" wood studs spaced @ 24" centres with single bottom plates and top plates. Window and door lintels to suit openings. 1/4" thick rigid exterior wall sheathing securely fastened to studs.

Roof Frame

Structural wood roof joists to suit 20 lbs/sq. ft. roof storage load and span. 7/16" thick rigid roof sheathing fastened securely to roof joists.

Insulation (Fibreglass Blanket)

Floor — 2-1/2" fibreglass insulation (R8)

Walls — 2-1/2" fibreglass insulation (R8)

Roof — 2-1/2" fibreglass insulation (R8)

2 mil poly vapour barrier

Interior Finish

Floor — .080 gauge 12" x 12" vinyl composite floor tile. 2-1/2" black vinyl baseboard.

Walls — Easy care vinyl covered 1/2" thick gypsum board with colour matched vertical vinyl joint strips. Flame spread rating 25.

Ceiling — Suspended system with metal tracks and 2' x 4' non-combustible white acoustic tile. Flame spread rating 25. Clear floor to ceiling height, approximately 7' 5"

Exterior Finish

Roof — 28 ga. flat sheet steel.

Walls — 28 ga. ribbed steel siding and trims with maintenance free baked enamel finish in a choice of stock colours.

Underfloor — 1/4" rigid sheathing glued and nailed to joists.

Entrance Door

1-3/8" x 2'8" x 6'8" hollow core wood slab door pre-hung in steel frame complete with 1 pair butt hinges, keyed lockset, sweep seal, threshold and check chain. Frame sealed with butyl based sealant.

Windows & Vents

4' wide x 3 ft. high wood frame single pane sliding glass windows. Frames painted with 2 coats quality paint. Quantity varies with layout. Frames sealed with butyl based sealant.

Electrical

CSA approved fixtures. Wired to electrical code and Ontario Hydro inspected. Standard pre-wired electrical package includes surface mounted 1 ft x 4 ft fluorescent light fixtures with wraparound acrylic plastic lens complete with switch and lamps. Duplex electrical receptacles. Exterior service entry conduit passes through wall for ease of hook-up to 15 amp 120 volt service. All wiring concealed in walls and roof. Check layout or quote for equipment capacities, quantities and locations.

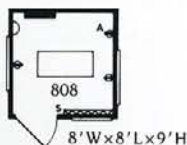
Base Supports

4" x 8" x 1-1/2" high painted wood supports. (1-1/2" clearance for fork truck lifting access.)

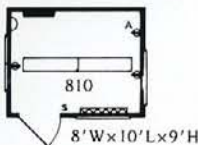
"Specifications are subject to change without notice where required to enhance the value of our Buildings."

Standard Model Specifications

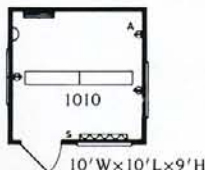
MODEL 808	MARK VII	MARK IV
Wt. lbs. Approximately	2560	2560
Windows	3	1
Receptacles	2	1
Lights (1' x 4' two lamp fluores.)	2	2
Electric heat	1000W	0
Exhaust fan	1	0
Glazing	Insulated	Single
Door	Steel insulated	H.C. wood
Insulation	R.12/R.20	R.8



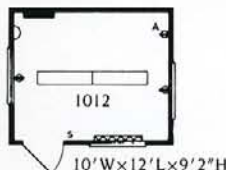
MODEL 810	MARK VII	MARK IV
Wt. lbs. Approximately	3000	3000
Windows	3	1
Receptacles	2	1
Lights (1' x 4' two lamp fluores.)	2	2
Electric heat	1000W	0
Exhaust fan	1	0
Glazing	Insulated	Single
Door	Steel insulated	H.C. wood
Insulation	R.12/R.20	R.8



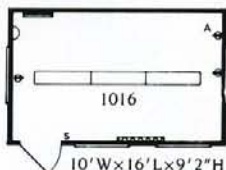
MODEL 1010	MARK VII	MARK IV
Wt. lbs. Approximately	3500	3500
Windows	3	1
Receptacles	2	1
Lights (1' x 4' two lamp fluores.)	2	2
Electric heat	1000W	0
Exhaust fan	1	0
Glazing	Insulated	Single
Door	Steel insulated	H.C. wood
Insulation	R.12/R.20	R.8



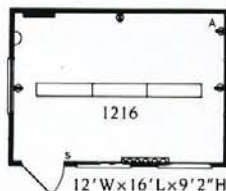
MODEL 1012	MARK VII	MARK IV
Wt. lbs. Approximately	4000	4000
Windows	3	1
Receptacles	2	1
Lights (1' x 4' two lamp fluores.)	2	2
Electric heat	1500W	0
Exhaust fan	1	0
Glazing	Insulated	Single
Door	Steel insulated	H.C. wood
Insulation	R.12/R.20	R.8



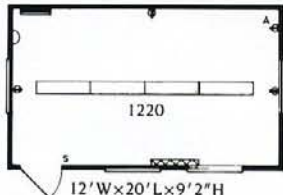
MODEL 1016	MARK VII	MARK IV
Wt. lbs. Approximately	5000	5000
Windows	4	2
Receptacles	2	1
Lights (1' x 4' two lamp fluores.)	3	3
Electric heat	2000W	0
Exhaust fan	1	0
Glazing	Insulated	Single
Door	Steel insulated	H.C. wood
Insulation	R.12/R.20	R.8



MODEL 1216	MARK VII	MARK IV
Wt. lbs. Approximately	5680	5680
Windows	4	2
Receptacles	3	2
Lights (1' x 4' two lamp fluores.)	3	3
Electric heat	2000W	0
Exhaust fan	1	0
Glazing	Insulated	Single
Door	Steel insulated	H.C. wood
Insulation	R.12/R.20	R.8



MODEL 1220	MARK VII	MARK IV
Wt. lbs. Approximately	6800	6800
Windows	4	2
Receptacles	3	2
Lights (1' x 4' two lamp fluores.)	4	4
Electric heat	2500W	0
Exhaust fan	1	0
Glazing	Insulated	Single
Door	Steel insulated	H.C. wood
Insulation	R.12/R.20	R.8



Legend

Power panel	Electric baseboard heater	Fluorescent fixture	Wall receptacle
Wall fan	Optional A/C receptacle	Fluorescent fixture	Light switch

NOTE: A full range of other sizes are available in widths up to 14 ft. and lengths up to 60 ft.

Larger Buildings

CPS also makes large multi-sectional office complexes. For more information phone or fax for our free brochure, "Relocatable Sectional Office Buildings".



Halton Separate School Board office expansion

Standard Options

- Air conditioner units wall or roof mounted
- Provision for future air conditioner
- Baseboard electric heaters (incl. in Mark VII)
- Forced air electric heaters (wall or ceiling mounted)
- Gas/propane heaters
- Exhaust/intake fans (incl. in Mark VII)
- Phone/computer/communications (EMT) conduit
- Dimmer controls for interior lighting
- Additional electrical outlets
- 60 amp circuit breaker panel (incl. in Mark VII)
- Special door hardware, closers, panic exit, locks, kick plates
- Additional doors hinged or sliding
- Door glazing lights (incl. in Mark VII)
- Additional fixed or sliding windows (various sizes)
- Aluminum or steel framed windows and doors
- Special glazing, safety, wired, tinted, insulated, acrylic
- Sprinkler systems pre-piped
- Upgrade sound insulation (Sound Stop 50 & 60)
- Upgrade thermal insulation
- Carpeting or one piece flooring
- Washroom facilities

Sound Stop Options

For areas with excessive noise, such as in manufacturing areas with noise levels approaching or above 100 db., CPS offers the exclusive Sound Stop 50 (Sound Transmission Class 50) and Sound Stop 60 (Sound Transmission Class 60) systems. †

CPS Sound Stop Systems reduce noise by increasing the mass of the floor, walls and roof — breaking the noise vibration path, upgrading the noise absorption and making the building as air tight as possible.

CPS Sound Stop Systems include:

To increase mass

- 1 or 2 layers of Gyproc sheathing inside and outside of framing
- Triple glazed windows
- Insulated steel doors, with sound seals and insulated glass

To break vibration path

- Noise stop board
- Optional resilient metal channels
- Anti-vibration pads under floor risers
- Seal all joints to make building air tight

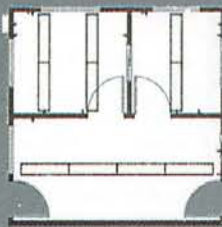
To absorb noise

- Fibreglass cavity insulation

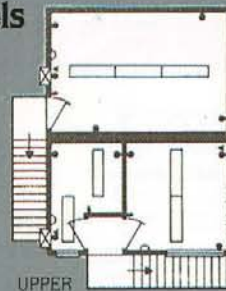
Special Options

- Two storey units
- Custom layouts and sizes
- Counters, plan tables, work stations storage cabinets
- Various exterior finish treatments
- Interior partitions
- Steel stairs, mezzanines, elevated support platforms
- Lighted exit signs
- Emergency lights
- Air cleaners/purifiers/clean room equipment
- Humidity control
- Water cooled air conditioners
- Smoke alarms, heat detectors
- Security/intrusion/failure/gas alarms
- Pressurizing intake filtered ventilators
- Exterior lighting fixtures. Floor/spot/beacons
- Photocell controls for lighting
- Special interior lighting recessed/pot/dimming
- Explosion proof electrical fixtures/wiring
- Kitchenettes/water coolers
- Centralized heating and cooling systems
- Large capacity circuit breaker panels/transformers
- Ventilation louvres
- Wheels or casters
- H.D. vinyl sheet/rubber flooring/computer flooring
- Window blinds/shades/drapes
- Lockers
- Roof overhangs for Guard Houses/Outdoor Security Buildings
- Double wide equipment doors
- Steel frame non-combustible construction
- Fire protected wood frame 3/4 hr & 1 hr rated units
- Sloped or peaked roofs
- Vibration isolation
- Overhead suspension/crane lifting hardware
- Steel or aluminum checkerplate flooring
- Increased floor loading capacity to 350 lbs/sq. ft.
- Increased roof storage/snow loading capacity to 150 lbs/sq. ft.
- Increased clear ceiling height
- Floorless units
- Heavy gauge exterior steel siding available in 26, 24 & 22 gauge
- Steel underflooring lining
- Steel interior wall and ceiling lining

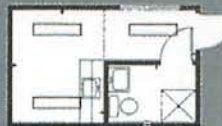
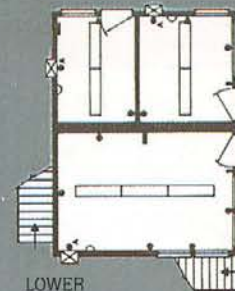
Typical Custom Models



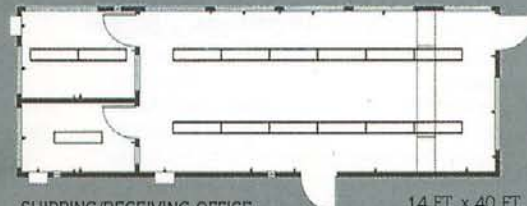
THREE OFFICE UNIT
18 FT. x 18 FT.



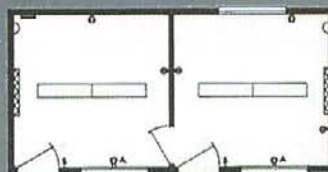
UPPER
LOWER
TWO STOREY UNIT



FIRST AID STATION
10 FT. x 16 FT.



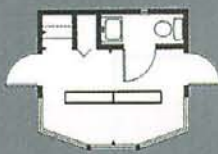
SHIPPING/RECEIVING OFFICE
14 FT. x 40 FT.



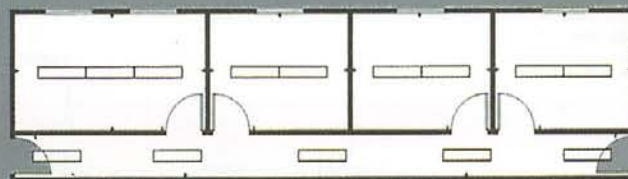
MARK VII DOUBLE OFFICE UNIT



WASHROOM/LOCKER ROOM/LUNCH ROOM UNIT
12 FT. x 38 FT.



OPERATOR'S CABIN
12 FT. x 12 FT.



FOUR OFFICE UNIT
14 FT. x 52 FT.



SECURITY
GUARD
HOUSE
BUILDINGS



RELOCATABLE SECTIONAL
OFFICE BUILDINGS



HIGH TECH BUILDINGS
FOR HOSTILE ENVIRONMENTS



MORE USEABLE SPACE
FOR LESS
MONEY



Modular III Plant Office System



CONTROL ROOMS/
ENGINEERS' SHELTERS

For more information on any of the wide range of CPS portable structures, ask for these other informative brochures.